

Stierli-Bieger

CH-6210 SURSEE · SWITZERLAND



220 CNC-WP
420 CNC-WP



HYBRID Technology

CNC-Busbar bending machine

NEW



Automatic angle correction:

During the bending operation, the integrated encode system measures the angle of the bent part and re-bends if needed (automatic spring-back compensation). The stop position, the required stroke and the spring-back compensation are each calculated by the control to achieve the best possible accuracy.



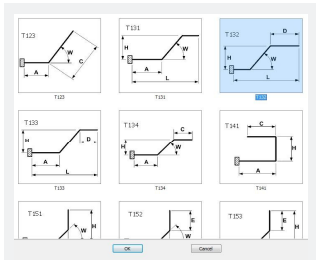
Modern color touch-screen control:

The Stierli-Bieger bending center is a highly productive and versatile machine, available with a single axis or with an optional back gauge for a 2-axis system. Easy to follow operator instructions appear on the screen. Programming can be done off-line or with "canned" or pre-programmed shapes that can be selected from a library of common busbar shapes.



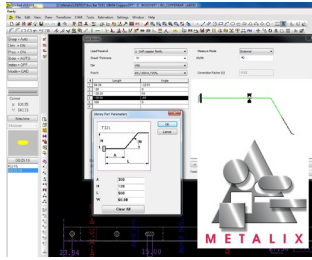
Stierli-Bieger
CH-6210 SURSEE · SWITZERLAND

Modern control system:



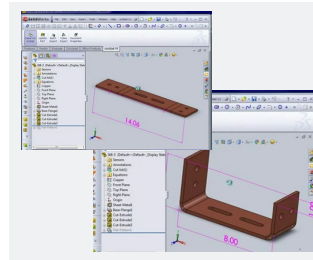
Fast machine programming:

The machines can be programmed quickly and easily directly at the machine. During the bending process, each bend is shown graphically.



Powerfull alternative programming system:

As an alternative, the METALIX programming system offers the possibility of generating the bending program and the associated punching program directly from CAD data.



3D Interface to METALIX:

3D geometry data can be transferred to Metalix:

*SolidEdge®, Solid Works®
Autodesk Inventor®
PTC Pro/ENGINEER®
ePLAN 3D*



Boschert „ready“ with Metalix

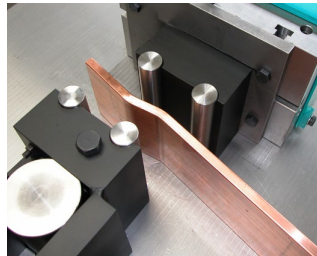
The CU-punching machines from Boschert are an ideal complement to the STIERLI bending machines.

The Metalix Cad/Cam system can create the punching and bending programs controlling both machines from a single drawing.

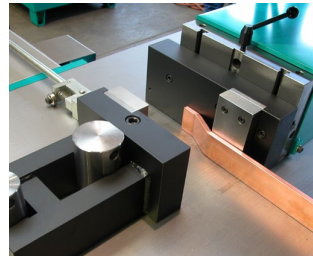
Strong tooling solutions:



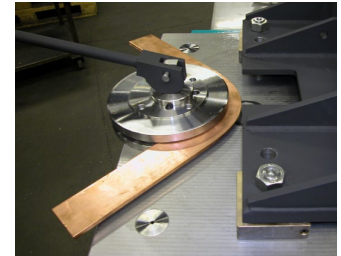
**Robust CNC back gauge with
1'000 / 2'000 / 3'000 mm**



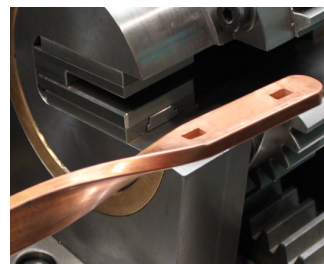
Step forming tool No.1



Step forming tool No.2



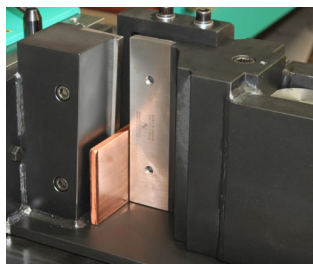
**Edgewise bending
manual or hydraulic clamping**



Twist bending tool



**Narrow section punch,
without support pin**



Cutting / shear tool



Round bar bending

Our advantages:

- High quality machines from Switzerland
- Robust machine construction for a longlife precision
- Modern control systems
- Experience since 1936
- Best support

220 CNC-WP
HYBRID

**22 to (tonnes)
220 kN**

*Bending output
max.
150 x 16 mm*

420 CNC-WP
HYBRID

**42 to (tonnes)
420 kN**

*Bending output
max.
200 x 20 mm*

Stierli-Bieger AG
Schellenrain 1
CH - 6210 Sursee
Switzerland

Tel: +41 41 920 20 55
eMail: marketing@stierli-bieger.com
Web: www.stierli-bieger.com